



Stated Meeting of the Presbytery of Boston

Zoom Meeting

March 9th, 2023

Meeting Packet



Notice of the Stated Meeting of the Presbytery of Boston

Date/Time: Thursday, March 9 at 7:00 PM

Location: Zoom Meeting

To receive the link to enter this meeting, **you must register online** in advance of the meeting. **Registration is now available.** [Click here to register.](#)

[This page on our website](#) includes instructions for participating in the meeting through Zoom, and also contains the registration link.

The meeting packet will be available one week before the meeting.

All teaching elders and ruling elders with the privilege of vote are expected to attend all presbytery meetings. If you have any questions, please feel free to contact the Stated Clerk, Paul Rack at statedclerk@presbyteryofboston.org

Worship Offering

Our worship offering will benefit Presbyterian Disaster Assistance: Turkey and Syria Earthquake.

To give online, click on this link: <https://pma.pcusa.org/donate/make-a-gift/gift-info/DR999999/>

New Covenant Trust Company

[Click here for a PowerPoint from New Covenant Trust Company](#) prepared for the 8 PM Order of the Day during our Assembly. With the transfer of our assets to NCTC, Sessions within our Presbytery obtain a discount of approximately 20% in the NCTC investment management fee. Grace.

Please invite treasurers from your congregations to enjoy the 8 PM, Order of the Day, during the Assembly. They can register on the web site. The presentation will last approximately 20 minutes with an opportunity to ask questions.

**Proposed Docket
Stated Meeting of the Presbytery of Boston**

		Length
6:30	Log-in and instructions for Zoom Presbytery Meeting	30
*7:00	Call to Order (Kate Carlisle, Moderator) Declaration of Quorum Opening Prayer Call for new business Omnibus Motion Introduction of New Elders Seating of Corresponding Members Acknowledging and Honoring Native Land	10
7:10	Nominating Committee (Katie Cole)	5
7:15	Worship Offering –PDA: Turkey and Syria Earthquake To give, click on this direct link: https://pma.pcusa.org/donate/make-a-gift/gift-info/DR999999/	30
7:45	New England GLOW (Jen Slater)	5
7:50	Stated Clerk (Paul Rack)	5
7:55	Personnel (Meagan Manas)	5
*8:00	Trustees (Thatcher Freeborn) New Covenant Trust Company	30
8:30	Amendments to the Constitution of the PCUSA	30
9:00	Committee on Ministry (John Sweet) Maeve Hammond, examine for ordination, Winchester UCC Samuel Caraballo, Commissioned Pastor for Primera Iglesia	30
9:30	Needham Task Force (Rob Mark)	15
9:45	Council (Kate Carlisle)	5
9:50	New Business (only if requested at beginning of meeting)	
	Adjourn	
	<i>* Denotes Order of the day</i> (All other times are guidelines)	

**Meeting Packet
Table of Contents**

Stated Clerk.....	1
Personnel.....	2
Representation.....	4
Trustees.....	5
Committee on Preparation for Ministry.....	7
Needham Presbyterian Church Building Task Force	8
Council	15
Moderator	16



First of all, thank you for asking me to serve in this capacity in Boston Presbytery. I was Pastor of a church in this presbytery a very long time ago (Waltham), before I also served in 7 more churches (mostly as Interim), and Stated Clerk for 18 years in 2 different now defunct New Jersey presbyteries (Elizabeth and Palisades). It is good to be back with you, if only virtually.

I began this position around January 1, 2023. My work so far has been normal Stated Clerk stuff: annual session statistics, staffing and taking Minutes for COM and Council, attesting PIF's, putting together the Docket for this meeting, responding to a variety of e-mails and phone calls which often involves getting people needed information, etc.

I have experienced some challenges with the technological side which I hope are being cleared up. I also want to say that the long-distance piece of this job is more of an adjustment than I anticipated. Some of this work depends on knowing and communicating with people in ways that are lost when we only have Zoom, e-mail, and phone calls. So were anyone to ask me I would advise that future Stated Clerks of this presbytery be able to be here in person at least some of the time.

Finally, THE MINISTER ID CARDS ARE IN! If you want one please text or e-mail me and I will sign it and mail it to your address in the directory. My phone is 908-625-1844 and my e-mail is paulrack@optonline.net

Blessings and peace,
Rev. Paul Rack



The Personnel Committee has been very busy in the past few months with two staffing transitions (more information below). We have also coordinated annual reviews for our current staff, Ben Chicka (Administration and Communication) and Donnie Dick (Sexton/Property manager at Needham).

Interim Stated Clerk

We are grateful to Rev. Paul Rack for being with us as Interim Stated Clerk, all the way from the Adirondacks (technology is a beautiful thing!). Paul served the Waltham church “many years ago.” Here is a little more about his background:

Paul was born in Bloomfield, NJ, in 1955, the son of a Presbyterian minister and grandson of a Presbyterian elder. After receiving degrees from The University at Albany (SUNY) and Princeton Theological Seminary, he was ordained by the Presbytery of Albany in 1981, and served as Pastor for 39 years in 11 churches, most of them as Interim/Temporary. He also was, for 18 years, the Stated Clerk for two different presbyteries (Elizabeth and Palisades, both of which were merged into a new presbytery in March 2021). He became officially Honorably Retired in May 2020.

He had an adopted adult son who died in August of 2021.

He and Susan were married at the Princeton Seminary chapel in 2007 (she was Pastor of a church he had formerly served). Together they enjoy the theater, wine, traveling, canoeing, camping (at the Wild Goose Festival), learning and teaching the Enneagram, and movies. They share a commitment to social justice.

Five-and-a-half years ago he suffered a heart attack, but his numbers have been good since then.

Paul considers being “retired” as Act Three of his life, and is devoting his time to walking, riding his bicycle, reading, writing, playing the trumpet, feeding the birds, meditating, and working around their new very old house and yard. He does guest preaching, using this as an opportunity to work through one of the most intriguing books of the Bible: “The Song of Songs.”

Paul is serving with us on a month-to-month basis, currently scheduled until April 15, 2023.

Stated Clerk Search

The Presbytery of Southern New England is also searching for a Stated Clerk, so we have been meeting and decided to launch a joint search. Three members from our Presbytery (Meagan Manas, TE, Personnel; Kayla Edstrom, TE, Nominating; Moonsu Ham, RE, Trustees) are on a committee with three members of PSNE to finalize a shared job description and launch the

search. PNNE also has a member on the committee in the hopes that the three Presbyteries will continue to collaborate into the future. The committee's goal is to have the Job Description finalized and posted early in March.

Treasurer Transition

We had the difficult task of accepting the resignation of Rev. Andy Parmelee just a few weeks ago. This is a major transition for our Presbytery. Beyond all his work as Treasurer, Andy brought so much wisdom and expertise to many Presbytery committees and conversations, not to mention his service to the wider church. We wish Andy the best in this next chapter!

We are working together with the Nominating Committee and Trustees as part of a task force set by Council to hire a bookkeeper and nominate a treasurer to elect to serve temporarily (hopefully at this meeting!) in Andy's stead.

Please pray for us in this time of transition, that God would give us the discernment of what is best for the Presbytery, that the Holy Spirit would free up the time and energy needed for these important discussions and processes, that Jesus would be our guide and friend throughout it all.

Respectfully Submitted,
Rev. Meagan Manas, Personnel Committee Chair



Respectfully submitted,
Kathy Barnes, Chair
Tom Reid
Kyungmoon Yoon

1. For information

- A. Information from Congregations** – Updated 2022 information is being gathered from the churches of the Presbytery. Demographics include age, gender, and race/ethnicity, per the data provided through the PC(USA) Annual Statistical Reports.
- B. Information from Teaching Elders** – Information has been gathered from the teaching elders of the Presbytery. Thank you to all who responded, and if you didn't send your information in, we will continue to gather information throughout 2023.

The 2021 congregational / 2022 teaching elder information has been shared with the Nominating Committee and Council. We will work with the Nominating Committee and Council “to advise the council regarding the implementation of principles of unity and diversity, to advocate for diversity in leadership, and to consult with the council on the employment of personnel, in accordance with the principles of unity and diversity in F-1.0403.” (Book of Order G-3.0103)

2. For action

N/A



Bury your treasure? No way!

Presbytery Builds a Better Investment Partnership

Sessions now gain a new investment opportunity at New Covenant Trust Company (NCTC). The Presbytery is partnering with NCTC to invest its endowment. Sessions, too, can invest – at a reduced cost!

Last year, the Presbytery's Trustees, on recommendation from its Investment Sub-Committee, voted to use NCTC for its investments. The transition is complete. NCTC is investing our assets.

A very good reason for using NCTC is its ability to align financial investments and dollar dreams with Christian principles. The Presbytery, for instance, has voted to invest in carbon fuel free securities. NCTC, part of the Presbyterian Foundation, provides us with that ability.

The NCTC – Foundation – Presbytery of Boston partnership delivers a Presbyterian approach to investing plus additional, wrap around services. Unlike traditional brokers and financial advisers, this investment team understands stewardship. It talks mission.

NCTC is ready to provide your session with expert strategy and guidance on:

- Customized investment planning & policy development
- Investment & portfolio management
- Values-Based investing
- Charitable trust services
- Endowment management
- Financial planning
- Tax planning

Call on the team for comprehensive charitable gift services through the Presbyterian Foundation:

- Fundraising consulting
- Gift planning
- Policy review
- Capital campaign consulting
- Planned giving services

Most important of all? With this new partnership we can build a *Presbytery-wide culture of generosity!* Win. Win.

For more information, contact the Presbytery's Ministry Relations Officer, Rev. Dr. Rose Niles, at rose.niles@presbyterianfoundation.org or 845-326-6501. Alternatively, contact Brad Masters, Vice President, NCTC at brad.masters@presbyterianfoundation.org or 502-569-5910. As always, your Presbytery Trustees, led by Ruling Elder Thatcher Freeborn, 617-913-8184, or thatch10@gmail.com, are ready to help. Remember: ask for the Presbytery discount, reduced management fees!



Committee on Preparation for Ministry

For Information:

We met with Samuel Caraballo, who is a Ruling Elder at Primera Iglesia for two reasons. First, we moved that he is prepared to become a Commissioned Ruling Elder as the Session requested. This process now moves to COM. Second, we moved to accept Samuel as an inquirer.

Council asked that I draft a response to the use of Judges 19 (“the Levite’s Concubine”) in the Exegesis Ordination Exam. None of our candidates took this Exegesis exam, nor did we volunteer any readers for this cycle. These remarks are my own, as I did not give myself ample time to pen a response and seek approval from my CPM colleagues before reports were due, though they shared my concern when I disclosed the controversy at our February 14 meeting.

(Content warning: sexual assault and violence)

I believe the Presbyteries’ Cooperative Committee on Examinations for Candidates owes an apology to candidates and readers for insensitively choosing Judges 19 to examine candidates’ ability to interpret Scripture. While pastors do need the ability to interpret all passages of Scripture and address any questions or concerns about difficult passages, the pressure-packed environment of an ordination exam is not the place to determine whether candidates, especially survivors of sexual assault, can process a text of rape and dismemberment. While it did not happen to us, the PCC put CPMs in a difficult position as the face of the PC(USA)’s ordination process for candidates. I did not receive any warning ahead of time to prepare to respond to affected candidates or readers, and I believe the candidates and readers did not receive a warning before taking or reading the exam, respectively. I believe there could have been much more pastoral sensitivity to our candidates and readers in this process. I hope steps are taken to listen to concerned parties, learn from this, and improve our denomination’s ordination exam process.

Faithfully submitted,
Rev. Drew Hanson, Chair



Needham Presbyterian Church Building Task Force

Our 3-person task team, consisting of Patricia Carpino, Rev. Rob Mark, and Carol Patey, began meeting in May 2022. Rev. Theodore DeMarco, Presbytery Clerk, laid out our charge: to make a recommendation to the Presbytery of Boston on a best course of action to take regarding the future of the building of the former Presbyterian Church of Needham, 1459 Great Plain Avenue, Needham, MA.

In addition to meeting regularly, our team toured the facility with Donald Dick, Building Manager; met with the Session of Primera Iglesia; and consulted with the Presbytery Trustees. This report provides background on the building's history, its previous congregation, the congregation presently meeting there, the building's present revenues and costs, and options for the building's future with our recommendation.

Background on the Building and Presbyterian Church in Needham

In 1957, the Scotch Presbyterian Church, incorporated in 1887, bought property on the corner of Great Plain and Central Avenues—1458 Great Plain Avenue—in Needham. The congregation had begun in Boston with 35 people who immigrated from the Maritimes in Canada and held services in Gaelic. It had evolved from a mostly Scottish church to a church with “many Scottish.” A new church was built on the Needham property and was dedicated in May of 1960. It was truly the work of many hands. Members rolled up their sleeves and did a good portion of the finishing work in the building. They laid tiles, built cabinets, and plastered walls, giving of their talents directly from the heart. The property stands today as tangible evidence of their craftsmanship, willingness to work, and love of God. After moving, the congregation remained large for a period, but then saw membership decline. In 2019, the congregation voted to close, and the final service was held in June 2020.

The building itself is a brick facility with a large sanctuary, fellowship hall, kitchen, and offices on the main floor. Classrooms are in the basement, along with a large, finished room beneath the fellowship hall—the scene of many rummage sales. The sanctuary has a sound system, cushioned pews that seat about 135, flexible space at the rear suitable for additional seating or reception space, and an approximately 35-year-old Associated Organ Builders electronic organ. Fellowship Hall has a stage with lighting and a sound system and folding tables and chairs to seat 100+. The kitchen includes three gas stoves, three sinks, a refrigerator, and workspace. The heating system was converted to gas with a new boiler in 2014.

Primera Iglesia Presbiteriana Hispana “ELIM” de Boston (now Needham) has been paying rent for the use of the sanctuary for worship and some additional space for weekly activities since the end of 2021. In addition, there are several other renters:

- Tobin Beaudet School (www.tobinbeaudet.com) – uses classrooms on weekdays in the basement
- alFreshCo (www.al-freshco.com/about) – uses the kitchen weekly for food preparation
- Needham Community Theater (www.needhamtheatre.org) – basement (set-building); additional evenings for rehearsals
- Newman Elementary School – about 30 times a year for large class events, projects, and movie nights
- Exercise groups – early morning classes
- Young youth sports programs – for an 8-10 week program
- Summer camps – weekdays for 4-6 weeks

In addition, the facility is used for shorter times by other organizations, such as Transitions (a job search group), Alcoholics Anonymous, a bereavement group, Boy Scouts, and Girl Scouts. In 2009, the property was assessed for land records at \$3,055,100 for the building and \$456,900 for the land (total of \$3,512,000). The Trustees may wish to pay for a current appraisal before transferring property.

Primera Iglesia Presbiteriana Hispana “ELIM” de Boston now in Needham.

Since November of 2021, Primera Iglesia Presbiteriana Hispana has been calling the building its home. The congregation is the first Hispanic Presbyterian church in the Presbytery of Boston. They became an organized Presbyterian Church in 1991 and since then have continued as a faithful community giving witness to the Gospel of Jesus in Jamaica Plain for 30 years and now from Needham. Members of Primera Iglesia are a diverse group in age and ethnicity with members from many Latin American countries. As members of a missionary church, they are a bilingual Hispanic church, and worship in a variety of ways. They worship with traditional classic hymns, yet they embrace worship in a variety of different Latino music genre such as rancheros, merengue, boleros, and salsa. They believe this helps make a relational connection with people of specific Hispanic cultures from all across Latin America.

Primera Iglesia Presbiteriana “Elim” has around 60 people gathering on Sunday morning at the Presbyterian sanctuary in Needham. They have Sunday school at 9:30 AM, with four classes—one for adults, one for the youth group, one for primary children and one with six candidates for Baptisms. They also have different ministries that meet; the women’s group gets together one Saturday per month; Praying Services are held on Tuesdays and Study Services on Fridays; and on Thursday nights the music group rehearses for the worship service on Sunday.

Hermano Samuel Caraballo, one of their members, is serving in the capacity of a commissioned lay pastor and is actively working with CPM to be fully certified as a Commissioned Ruling Elder. The congregation, with this new leadership, feels enthusiastic and has many projects and dreams to continue with the life of the church and with the mission of spreading the Gospel. They are now feeling comfortable in the sanctuary in Needham and hope to continue growing in faith and members there.

Building Income and Expenses

Currently, revenues from rentals, including rent from Primera Iglesia, cover the expenditures associated with the building and property, which include the facility manager's salary. The facility manager handles maintenance, cleaning, and administration of rentals. The building's expected income from rentals for 2023 is about \$101,500, whereas related expenses, which include utilities plus salary for the building manager, are estimated to be about \$89,500 for 2023 (see spreadsheet below).

Needham Church Estimated Income/Expenses for 2023			
	Per June budget:	Adjusted for Reduced Hours, per Andy Parmelee, Treas. (80%):	Adjusted for Reduced Hours, to 75% per Patricia (30 of 40 hrs.):
Property Income	101,500	101,500	101,500
Property Expenses			
Property manager	64,400	51,200	48,300
Property Manager-related Expenses	4,904	3,931	3,678
Property utilities and maintenance	38,577	37,500	37,500
Total property expenses	<u>107,881</u>	<u>92,631</u>	<u>89,478</u>
Net income	-6,381	8,869	12,022
<p>Note: Andy Parmelee said utilities will likely be higher than the estimate, but they will be surcharging increases back to renters.</p>			

Building and Climate Reparations

As followers of Jesus who in contrast to the fox and bird had nowhere to lay his head ([Matthew 8:20](#)), we do not believe in ownership. We only believe in stewardship ([1 Corinthians 4:1-2](#)). No Presbytery, no congregation truly “owns” anything – least of all “property.” All belongs to God ([Psalm 24:1-2](#)). And all we have is “on loan” to us from God, the wider Church, and future generations. Therefore, as we look at the gift of this building in Needham, we recognize and give thanks for both our ancestors in faith who first built this building in 1957, and also our Indigenous ancestors who first stewarded these lands following the last glacial retreat some 10,000 years ago. We honor their decedents known broadly as the Massachusetts Nation who over the past several centuries have rightly stewarded the lands that, following the arrival of undocumented white people from Europe, have come to be known as Needham. And we commit ourselves in solidarity to their ongoing presence, leadership, sovereignty and flourishing in this 21st century.

In light of this truth telling, we desire to live into our Presbytery's commitment to honor our Presbyterian Church (USA) "Matthew 25 Initiative" that centers the dismantling of structural racism. The way land and wealth have been stolen and redlined away from people of color since the 1600s is an important aspect of the pervasive sin of structural racism. One way to interrupt this sin is to envision new ways of understanding how we might begin thinking about the sanctuaries and "properties" we hold in trust together. While we are overjoyed to recommend that the Presbytery give the building and property at Needham to an active Hispanic congregation within our Presbytery (see below), we also suggest this could be a Spirit led opportunity for us to lean into the spirit of reparations and climate justice by doing even more.

Community Solar

We propose that the Presbytery of Boston accompany Primera Iglesia by working with Resonant Energy (www.resonant.energy) to establish a community solar project on the roof of the Needham building. The solar energy produced from this rooftop array (~75.8kW, 158 panels) would produce well over twice the amount of total energy needed for the congregation and all associated tenant's bills (including the school). In the spirit of climate justice reparations and the generosity of Jesus, the remaining energy can be given away to low-income neighbors in historically underinvested communities who bear higher energy burden and would benefit from free renewable energy credits.

In order for this project to work, we propose that the Presbytery figure out a viable plan to purchase the solar panels outright (~\$230K) through a combination of denominational loans (perhaps through the Presbyterian Investment and Loan Program) and/or using special designated funds. The projections from Resonant are that within six years, the combined income from the federal and state incentives, along with the revenue generated from solar credits purchased from the Green Energy Consumer Alliance www.greenenergyconsumers.org would cover the initial investment in the project. Further, with the support from a denominational/Presbytery loan, we could see annual net savings from the solar project greater than the debt service.

The full cost of the solar installation will not be finalized until a careful on-site inspection by Eversource and Resonant Energy is completed, and will likely involve a \$20K charge for grid-side upgrades (already included in estimated total above), and likely associated roof repairs (not yet included as not yet known). The costs for roof repair would need to be folded into the overall project cost to be covered by the loans.

Resonant Energy's mission is to use solar projects to build wealth in under-invested communities. They are a B-Corp and 100% employee-owned. They believe that the people most heavily impacted by climate change and racial injustice should receive the greatest benefit from the shift to an economy powered by clean energy. They have been working to realize this vision since 2016, and have completed solar installations across more than 190 sites to date, 59% of which serve Environmental Justice Communities. They have installed panels at Fourth Presbyterian Church in South Boston and Bethel AME Church in Jamaica Plain.

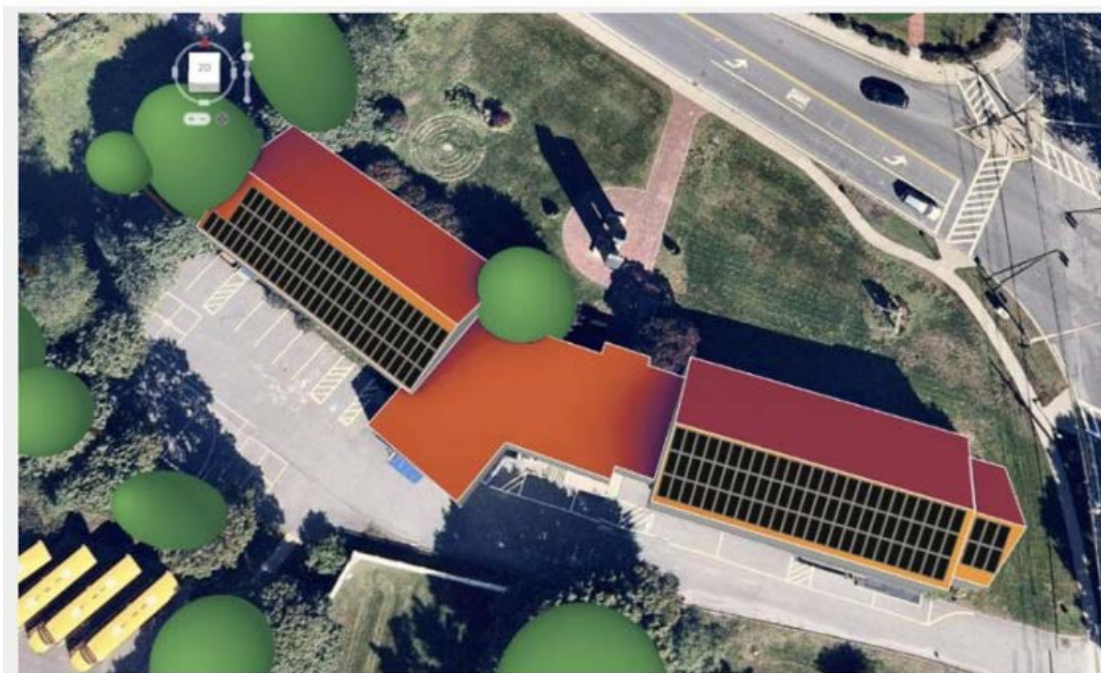
By way of summary from Resonant for this Direct Ownership Community Solar:

- Upfront Cost: ~\$230,000 (including likely utility-side work, but roof repair is extra)
- Break-even year: Year 6
- 25- Year Net Savings: \$294,214
- 1. *Revenue / Savings Streams:*
 - Electricity Savings: Electricity savings to cover the usage at 1458 Great Plain Ave
- 2. Payment for Electricity Credit Donations: Get paid to donate the excess power to low-income residents in Boston
- 3. State Incentive (SMART): Direct deposit payment for each kWh produce
- 4. Direct Pay Federal incentive worth at least 30% of the system cost

To be clear, we as the Presbytery working in collaboration with Primera Iglesia will actually get paid to donate extra renewable energy produced from these panels! The local non-profit, Green Energy Consumer's Alliance (GECA), has a fund that will pay organizations to give away their extra clean energy. GECA wants to support a more equitable clean energy economy and support those who face the highest energy burdens. Resonant will set up the utility paperwork detailing how much of our solar power gets sent to the various electric bills. Every month, using a platform called the Solar Equity Platform, they will read the electric bills to determine how much power they received from the Needham Church/ Primera Iglesia array and bill to GECA. Those funds will flow to the Presbytery using a secure online payment transfer. The specific recipients of this free renewable energy will be selected working with GECA and other community partners to identify eligible residents who are taking action for clean energy and climate justice in their communities.

While these benefits are clear both financial (free electricity for Primera Iglesia!) and missional (Matthew 25), they are of course not without risks and commitments. Once we purchase these panels outright, we are ultimately responsible for their proper operations and maintenance. If for any reason GECA can no longer support the community solar, we will need to hire Resonant to re-assign the excess power to a nonprofit that can pay for it. GECA fully intends to pay for the power for the full 25 years, but it is not a guarantee. Delays with the utility are fairly common and could lead to delays in seeing revenue after paying for the solar array. We will also need some representation from the Presbytery to accompany Primera Iglesia in this process to ensure this project gets implemented and well managed. The Building Manager of PI will clearly need to dedicate some time to be available especially in the first year or so of this project when the site evaluations and installations take place and all the contracts and details are ironed out. We recommend forming a small solar team to help manage this process for this initial year so that all the logistics are not placed as a burden upon Primera Iglesia. It is our understanding that once contracts are signed and payments are made with Resonant Energy, the installation can happen within about 6-10 months. The first step would be to sign a letter of intent, and place a \$10,000 deposit.

In the opinion of our Task Force, the pros far outweigh the cons.



(envisioned solar layout on the Needham Building)

Task Force Recommendation for the Future of 1458 Great Plain Avenue Facility

The Task Team unanimously recommends that the Presbytery turn over the property at 1458 Great Plain Avenue in Needham to the stewardship of the Primera Iglesia congregation and accompany them in starting a community solar project (as detailed above). We believe that passing on the building to another congregation with international roots would be in keeping with the desires of those who worked on and worshipped in the building previously. We believe the building can work for the Primera Iglesia members as they reach out to the broader community and can continue to provide income that will support the congregation as well. This fits well with the Presbytery's deep desire for its buildings to remain in the stewardship of active worshipping communities under the umbrella of our reformed bodies. While aware that buildings can come as both a blessing and a burden, we have carefully consulted and met with Primera Iglesia's session to check and get confirmation that the blessings would outweigh the burdens. The Presbytery of course will remain as an open line of communication with Primera Iglesia's session in the coming years if this balance should at all shift.

Other options we considered but believe would be less appropriate include the following:

1. **Property is sold to an actively worshipping Jewish congregation in Needham** – A Jewish congregation has approached the Presbytery and asked that it consider selling the facility to them. They have been home-based to date and are at a point where they would like a building of their own. They have said they have resources to pay for the property. While the congregation is not a Christian one, it would be a body that would continue the worship of the one true God and the study of scriptures that are shared with the Presbyterian Church, and such an action would support multi-faith solidarity.

2. **Investigate options to sell at below-market price to a non-profit organization** – The town considered buying this building for a senior center in 2009 (a need that has since been met but indicates its suitability) and perhaps there is a similar use that would allow for services to the broader community in some way. Proceeds could be used in a productive way to further the Presbytery's goals, perhaps for new church development in another location.
3. **Sell on the open market** - Similarly, proceeds could be used to further the Presbytery's goals. The Task Force suggested to the Trustees that we conduct a proper, updated assessment of the current market value, but found this process alone would cost a few thousand dollars, and since we unanimously decided to give the property to Primera Iglesia, we did not move ahead with this task.
4. **Keep as it is** – The building is covering most of its costs with rentals, and as operations return to more normal times, there is the possibility that revenues from the building could exceed costs of maintaining it. This would allow for use by the Presbytery or for another purpose as yet undetermined that is coordinated with existing renters. This option however requires continued monitoring by the Trustees or another Presbytery body.
5. **Give the entire property away in the spirit of the Land Back movement.** The Land Back movement is where people who represent the legacy of settler-colonialism chose to give their property/ land back to local Indigenous communities. There have been recent prophetic examples of this in Northern New England and Oregon and something we as a Church should absolutely be prayerfully in tune with and considering. However, while highly in line with our Matthew 25 commitments, our own current needs to provide a building for a viable congregation within our Presbytery in need of a spiritual home seems to outweigh this worthy moral goal. We ask the Presbytery to keep this option in mind in future contemplations about how we see land & property through God's invitation.

Submitted with respect & gratitude, and Yours in Christ,

The Needham Building Task Force: Carol Patey, Patricia Carpino, Rev. Rob Mark



In December, Council voted by email to approve the nomination of Rev. Paul Rack as Stated Clerk Pro Tem.

The Council met via Zoom in January and February to discuss and take action on various matters. Council is meeting at the Newton church on March 1 for a special gathering including a meal and fellowship, along with brainstorming discussion around potential staffing options for Presbytery.

In January, we received an update from the Needham Task Force, who will bring a report to the March Stated Meeting of Presbytery.

In response to imminent website vulnerabilities, Council approved the expenditure of up to \$4000 from the operating budget to secure and upgrade the Presbytery of Boston website.

Council approved a scholarship of \$1050 from the East Boston Leadership Fund to Jessi Killilea, Director of Family Ministries at First Quincy, for the APCE conference in Birmingham in late January.

In February, Council received the resignation of Rev. Andrew Parmalee as Treasurer. The Presbytery of Boston gratefully thanks Andy for his post-retirement ministry as the Presbytery's Treasurer as he steps down from this office on February 28 after 12 years. Andy has brought to that work extensive validated ministry experience in finance as well as pastoral skills and dedication reflecting his service to the Presbyterian Church at all levels — as stated supply pastor, commissioner to the 208th General Assembly (1996), chair of the Committee on Ministry, and responsibilities with the presbytery's Board of Trustees helping the presbytery navigate challenges in these changing times.

Council authorized the expenditure of \$2,500 from the 2023 operating budget of the Presbytery for the Massachusetts Council of Churches, and to invite our sister Presbyteries in the Commonwealth, Northern and Southern New England, to match our contribution.

Council voted to establish a Task Force, comprised of representatives of Personnel, Nominating and Trustees, plus the Moderator, to evaluate the engagement of a bookkeeper or bookkeeping service, as detailed in the Trustees report.

Respectfully submitted,
Rev. Kate Carlisle, moderator



It was a joy and blessing to moderate the commission which ordained Yan Wang to the Ministry of Word and Sacrament, and installed him as Organizing Pastor of the Chinese Fellowship, on January 29 at First United Presbyterian Church in Cambridge. The newly ordained Rev. Wang celebrated Holy Communion, and an offering was collected to benefit the Chinese Fellowship, an inquiring faith community in our Presbytery. The service was a celebration of the Spirit's movement in the Church and of God's particular call to Yan. We were delighted to note that at least nine congregations of Presbytery were represented in the congregation assembled in person, and that those gathered online included siblings in Christ on multiple continents.

The commission included:

Elder Risa Barnett, First Presbyterian Church in Quincy
Rev. Ben Black, First United Presbyterian Church in Cambridge
Rev. Kate Carlisle, Moderator
Elder Michael Fitzgerald, Hartford Street Presbyterian Church in Natick
Rev. Drew Hanson, First Presbyterian Church in Quincy
Elder Lihwen Lin, Taiwan Presbyterian Church of Greater Boston

The moderator requests that Presbytery dissolve the Commission, with thanks for their service.

On February 9, at St. Matthew Syriac Orthodox Church in West Roxbury, Rev. Rob Mark and I were blessed to represent the Presbytery of Boston at a Massachusetts Council of Churches prayer vigil for those affected by the earthquakes in Turkey and Syria.

Respectfully submitted,
Rev. Kate Carlisle, moderator

PRESBYTERIAN

CHURCH



(USA)